



VISIT THE WEBSITE







A GATEWAY TO THE GREAT OUTDOORS

Gated Community, Wide Open Views

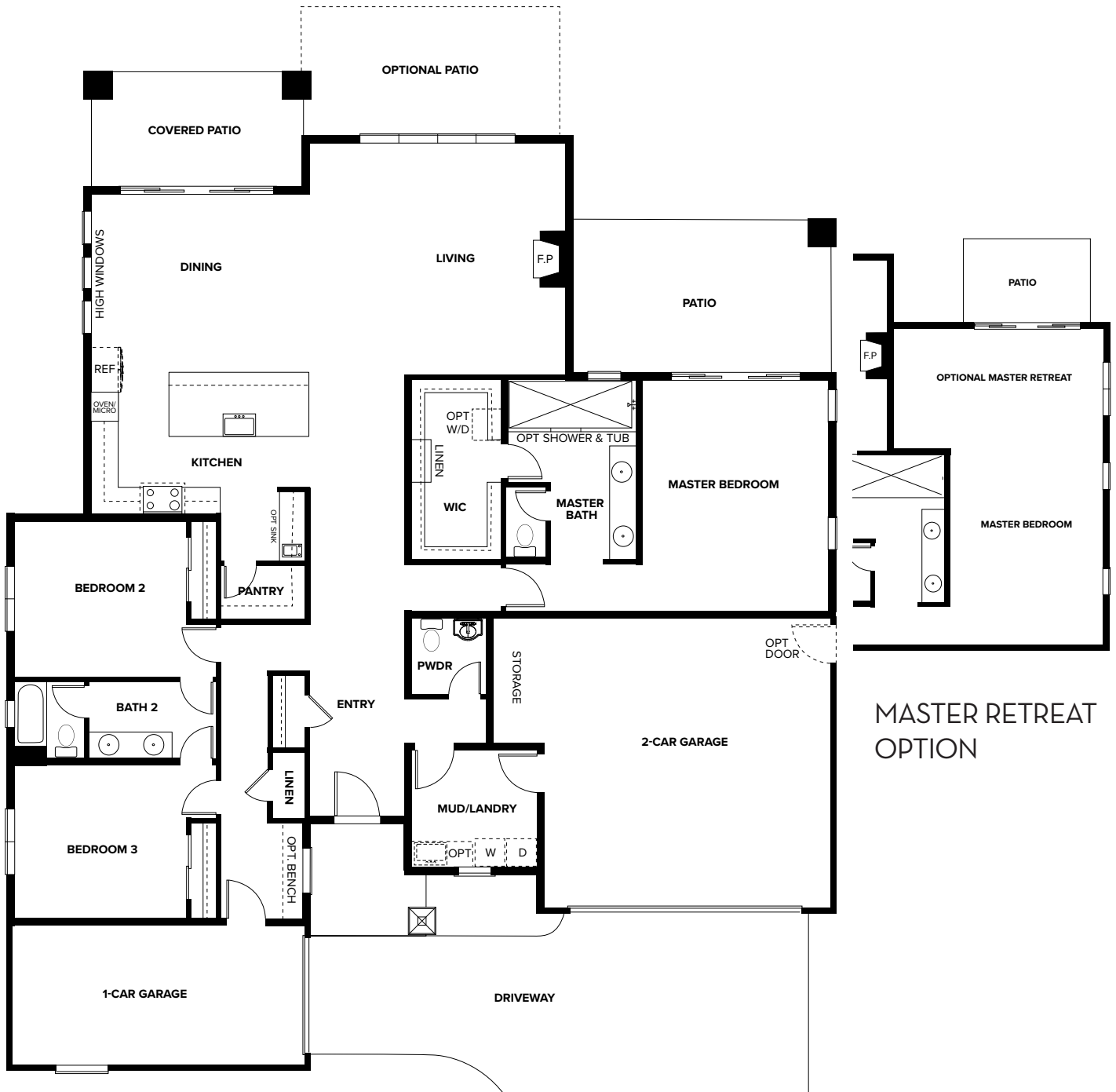
Nestled in the Sierra Nevada foothills and close to Somerset Country Club and downtown Reno, Brae Retreat by Desert Wind Homes is a gated community featuring single and two-story homes with 3-5 bedrooms, three-car garages, modern architecture, and spectacular mountain views.

Home for an Active Lifestyle

Located just a few miles from the Sierra Nevadas and California border, with easy access to charming Truckee and breathtaking Lake Tahoe, mountain living is in your backyard. And with Somerset Country Club and golf course nearby, Brae Retreat is your home for a vibrant and active lifestyle.

PLAN 1

2,655 SF + 246 SF OPTIONAL MASTER RETREAT



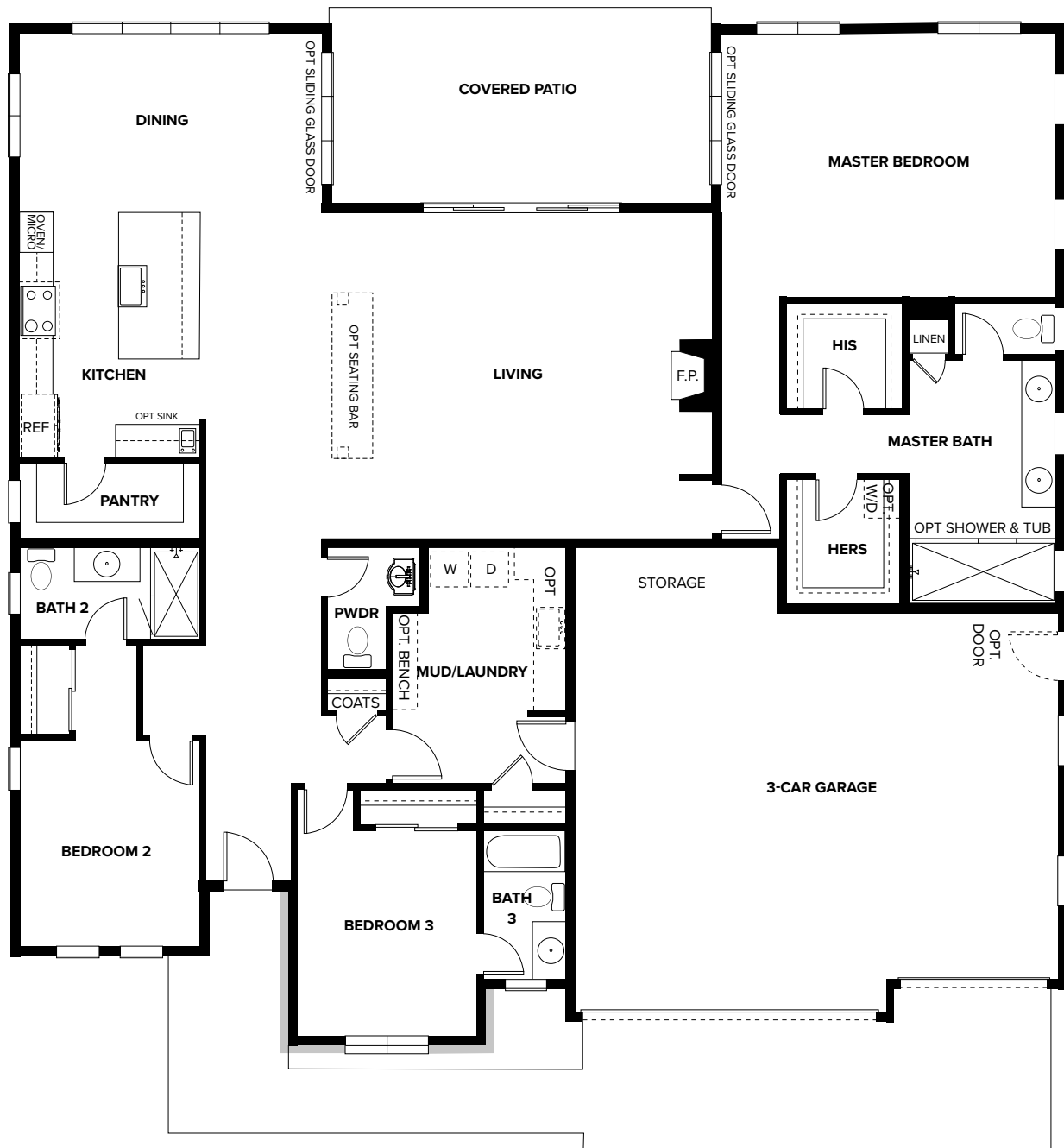
ELEVATION A



ELEVATION B



ELEVATION C



ELEVATION A



ELEVATION B



ELEVATION C



ELEVATION A

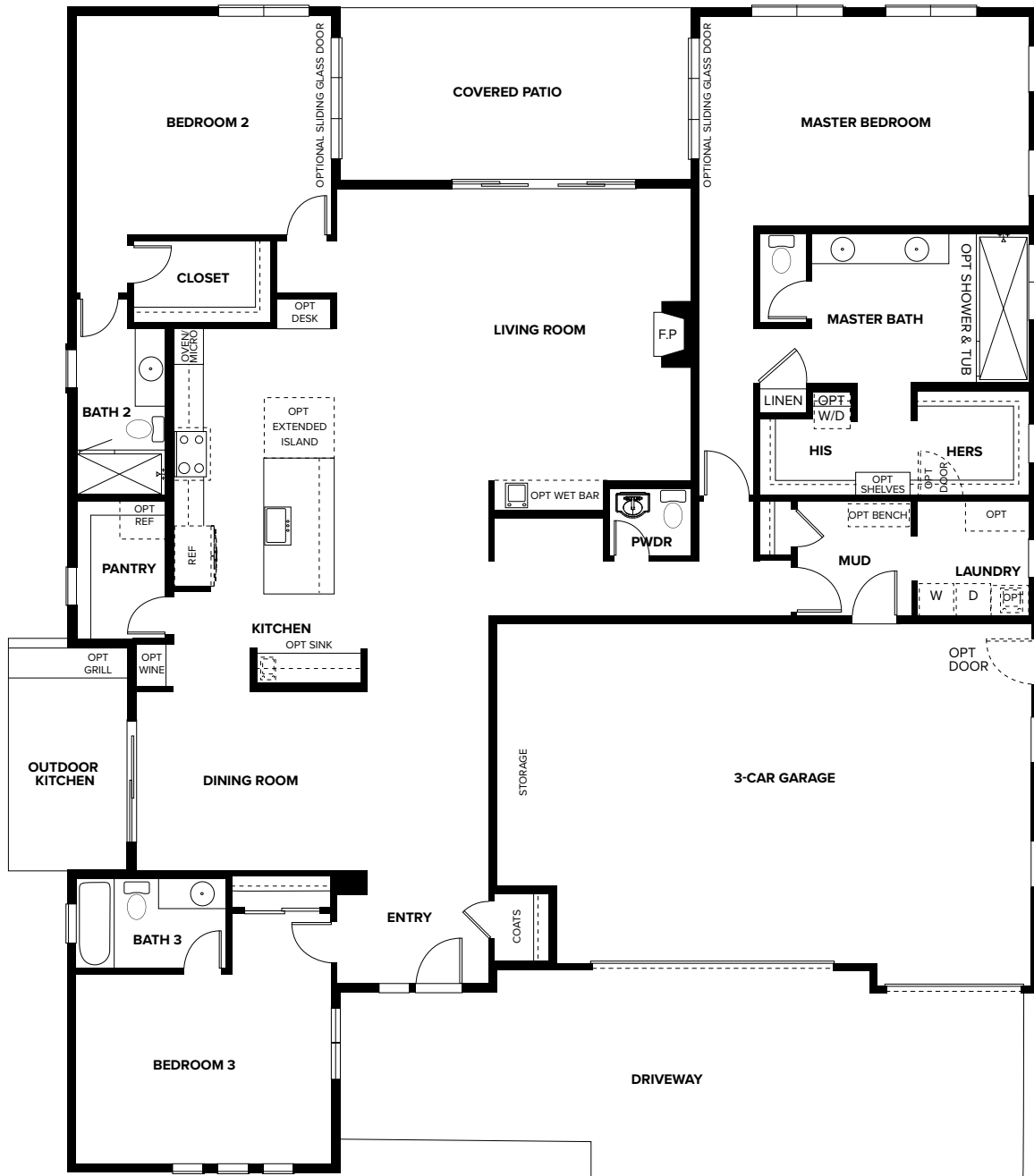


ELEVATION B



ELEVATION C





ELEVATION A



ELEVATION B



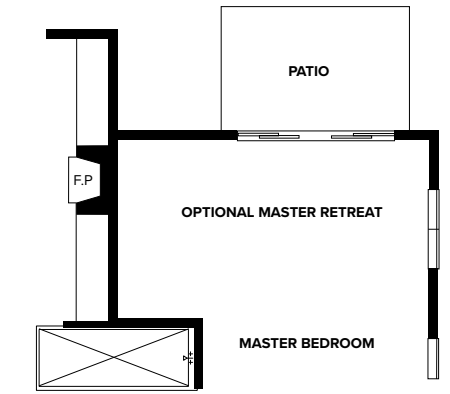
ELEVATION C

PLAN 5

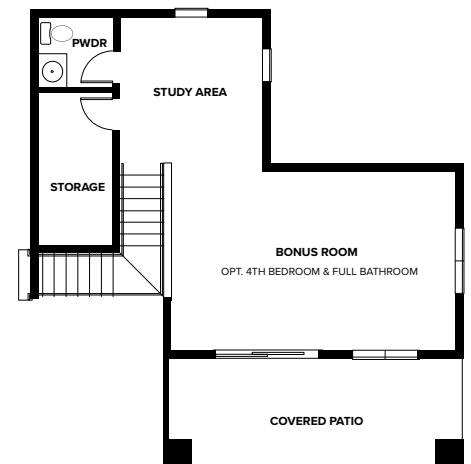
3,266 SF + 246 OPTIONAL MASTER RETREAT



ENTRY LEVEL



MASTER RETREAT OPTION



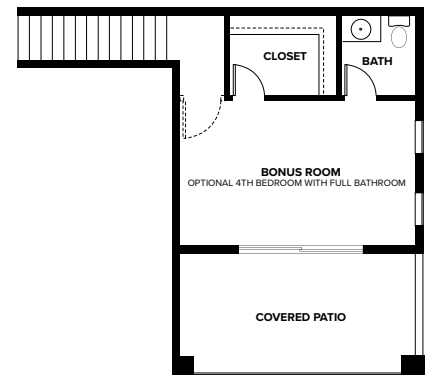
UPPER LEVEL



ELEVATION A



ELEVATION B



ENTRY LEVEL

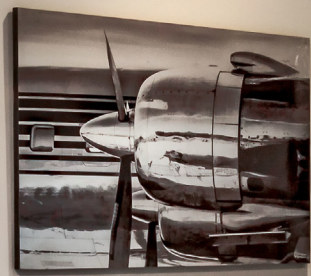
UPPER LEVEL



ELEVATION A



ELEVATION B

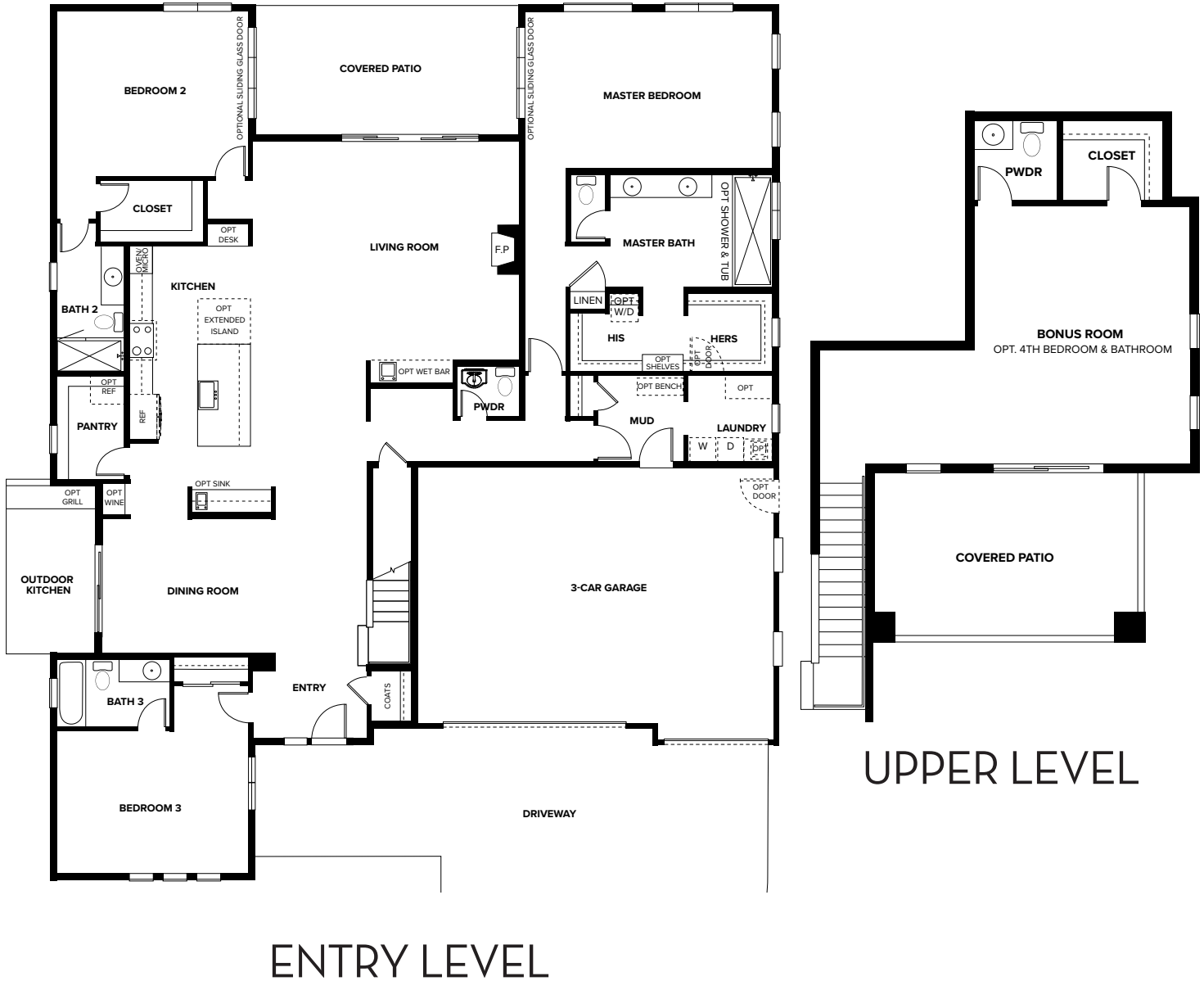




ELEVATION A



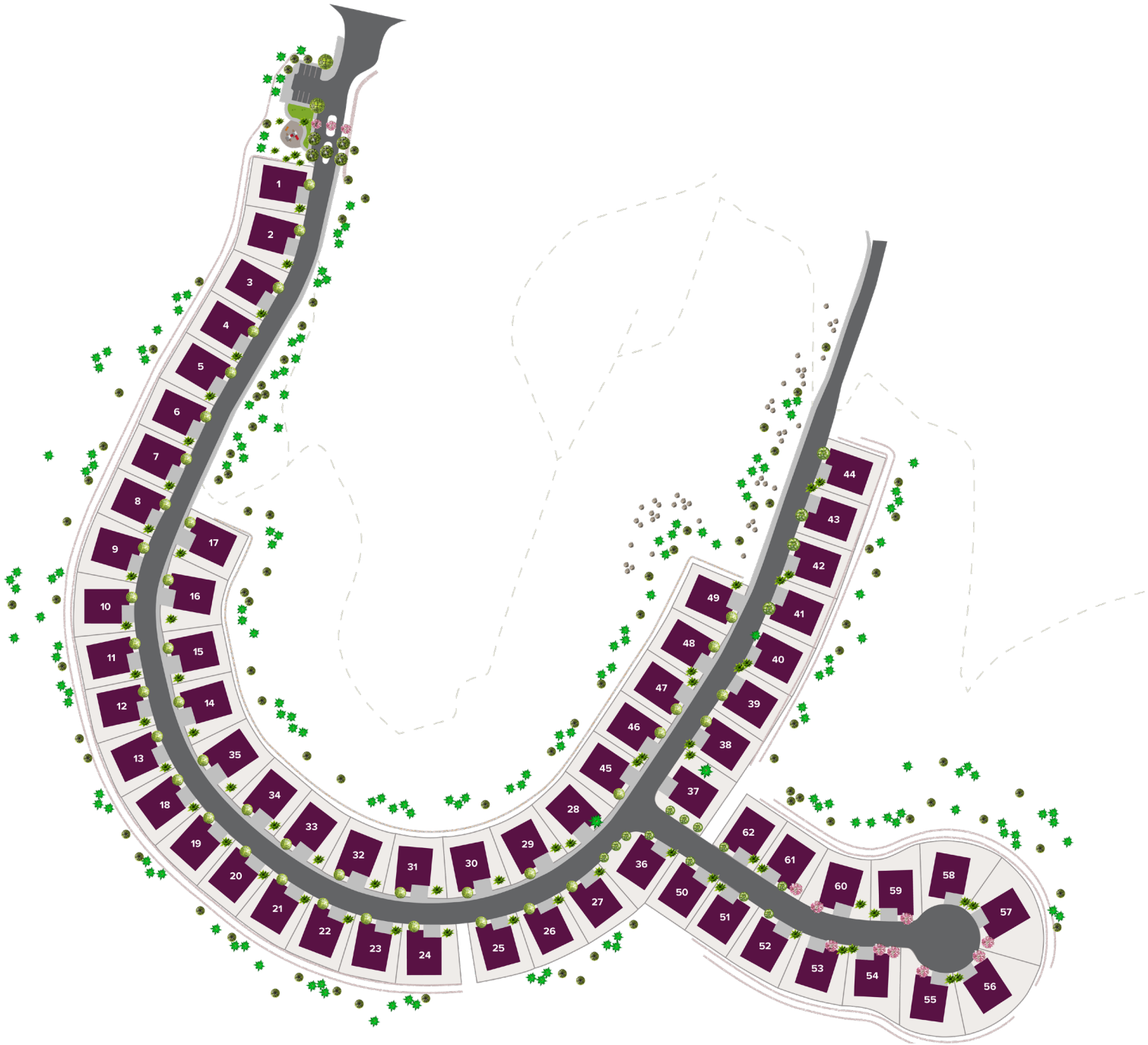
ELEVATION B



ELEVATION A



ELEVATION B





INCLUDED FEATURES

OUR COMMUNITY

- Located off First Roundabout in Somerset
- Convenient to Somerset Town Square
- Modern Architecture
- Gated Community

INTERIOR

- Maple Shaker Cabinets
- Matching 3 1/4" Baseboard and 2 1/4" Casing
- 18" x 18" Ceramic Tile Entries, Kitchen, Baths, Laundry/Mud Rooms
- Luxurious Carpeting in Great Room, Hallways, Dining, and Bedrooms
- Chrome Interior Hardware
- Garage with Interior Access
- Spacious Walk-in Closet in Master Bedroom
- Rounded Interior Corners
- Gas Dryer Hook-up in Laundry Room
- Paint Grade Window Sills With Apron
- 10' - 15' Ceiling (per plan)
- Gas Fireplace
- Textured Two-Tone Interior Paint
- CAT 6 Wiring
- 8' Modern Raised Six Panel Doors

EXTERIORS

- Three-Car Garage
- Paver Driveways and Walkways
- Lighted Entry w/ 8' Doorway
- Energy Efficient 50 Gallon Water Heater
- Clopay Modern Insulated Garage Doors w/ Glass
- Electric Car Charging Prewire
- Anderson Low E Thermal Dual Pane Windows Exterior Color Black
- Garage Door Opener
- Covered Paver Patio
- Acrylic Stucco Finish
- Flat Concrete Tile Roof
- Rain Gutters
- 8' 2 Panel Front Door

BATHS

- Adult Height Vanities
- Pedestal Sink in Powder Room
- Maple Shaker Cabinets
- Separate Water Closet in Master Bath
- Double Surface Mount Sink in Master Bath
- 12"X12" Ceramic Wall Tile w/ Mud Set Tile Floor in Master Shower w/frameless Enclosure
- Granite Slab Countertops with 4" Backsplash
- Elongated Porcelain Toilets
- Chrome Moen Faucets
- 18" X 18" Ceramic Tile in Bath

KITCHEN

- Moen Stainless Pull Down Faucet
- Moen Undermount Stainless Steel Dual Basin Sink
- Maple Shaker Cabinets
- 42" Kitchen Cabinet Uppers with Crown Molding
- Granite Slab Countertops with 6" Backsplash
- Stainless Steel Appliance Package Featuring
 - 36" Built-in Cooktop with 6 Burners
 - 36" Under Cabinet Hood
 - Single Wall Oven/Microwave
 - Stainless Steel Dishwasher
- 18" X 18" Ceramic Tile in Kitchen
- Garbage Disposal with Counter Top Air Switch
- Island w/ Breakfast Bar
- Walk-in Pantry



Valorie Holcomb

(775) 233-1910 • vh@DesertWindHomes.com • www.DesertWindHomes.com

©2024 Desert Wind Homes. In an continuous effort by Desert Wind Homes to improve the quality of your home, we reserve the right to change features, plans, and specifications without notice. Floorplan and elevation renderings are an artists' conception only. Significant changes may be made during or after the construction of the model homes. Desert Wind Homes reserve the right to modify, relocate, or eliminate any or all the features, specifications, plan utilities, design, or shape thereof, all without notice or obligation to the purchaser. Price range reflects the base price only. Location premiums will be charged for certain locations and are not included in the base price of the home. Additional association fees may apply. Other fees may also apply. Amenities are proposed and planned or may be under construction. All square footages are approximate square footages of the total liveable space. Please see your on-site New Home Specialist for additional information and more details. NV Contractors License #: 75651 Information as of 2/26/24.